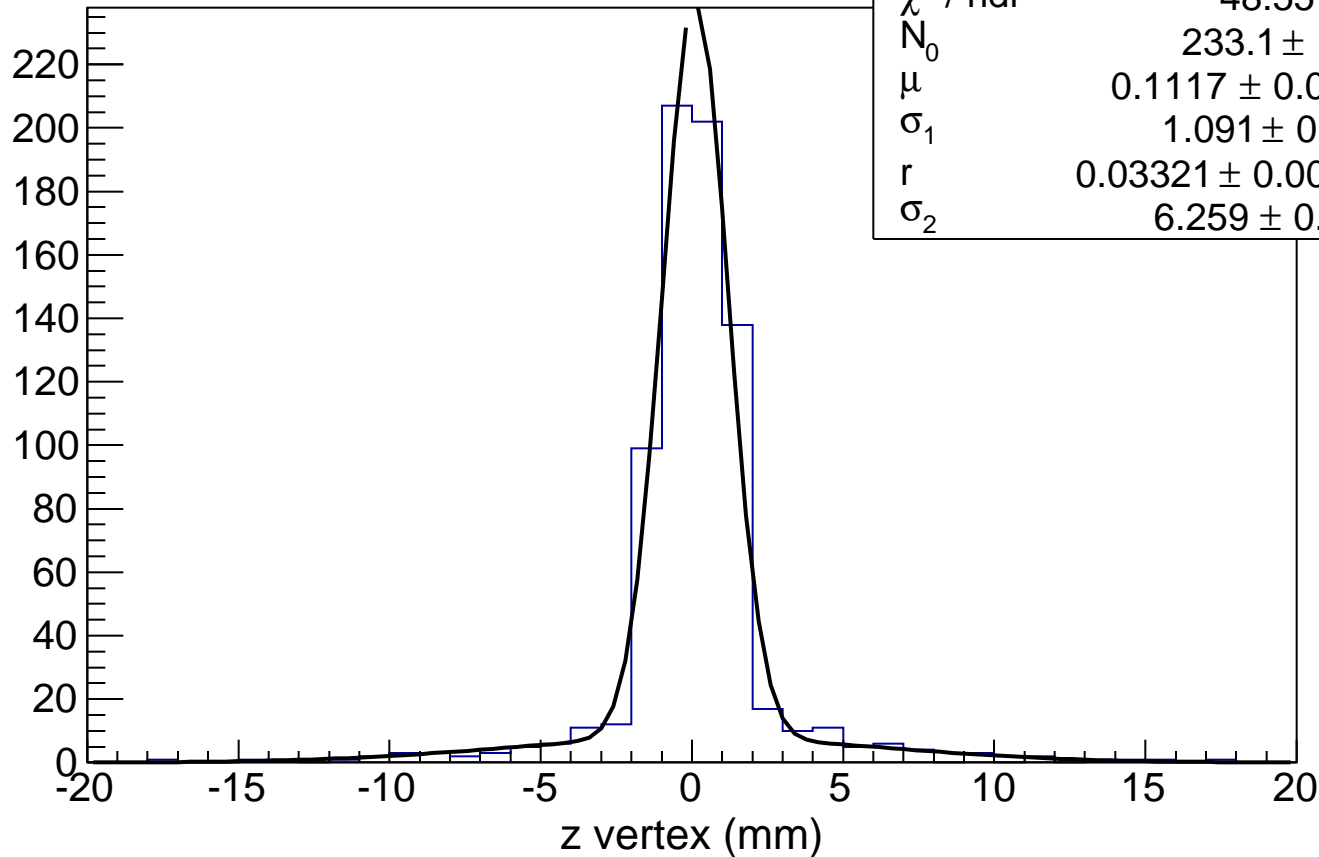


$$\sigma_{\text{eff}} = 1.30 \pm 0.06 \text{ mm}$$

 χ^2 / ndf

48.55 / 35

 N_0 233.1 ± 12.0 μ 0.1117 ± 0.0466 σ_1 1.091 ± 0.039 r 0.03321 ± 0.00587 σ_2 6.259 ± 0.495